

A cartoon illustration of the character Annie, with blonde curly hair, wearing a red dress with a white collar and cuffs, and black shoes. She is standing with her arms crossed, leaning against the letter 'i' in the word 'Annie'.

# Annie

**THE BROADWAY MUSICAL**



Jun 5 – Jun 14  
**2026 SEASON**

LyceumTheatre.org | (660) 837-3311

**CATALPA**  
ARROW ROCK, MO

CREATIVE & INNOVATIVE FINE DINING  
ON THE BOARDWALK



## OUR HOURS:

- Dinner service every Friday and Saturday evening from Easter until Christmas
- Lunch before every matinee and dinner before every evening performance.
- We also host special occasions like wine and beer pairing dinners, cooking classes and more.
- Private parties of up to 40 people and buses welcome

*Reservations strongly recommended.*

Reservations can be requested through [catalparestaurant.com](http://catalparestaurant.com) or by calling **660-837-3324**.



Stay up-to-date with what's going on by following us on Facebook



## SEASON SPONSORS



WOOD & HUSTON BANK



## PRODUCTION SPONSORS



**Dave & Nancy  
Griggs**

**Peter Kingma  
& Thom Lambert**

**Bill & Jennifer  
True**

**Jan & Gerald  
Summers**

- ADDITIONAL SUPPORT PROVIDED BY -



## MEDIA PARTNERS



## SPECIAL EVENTS SPONSORS



WOOD & HUSTON BANK



# Proud Supporter of the Arts



## “Outstanding Performance!”



## Bank with the Best in Arrow Rock

Access your bank account anytime, from anywhere,  
with the #1 rated mobile app!

**Visit us today to open your account.**

27 E. North Street, Marshall, MO 65340 | 660-866-6825



**WOOD & HUSTON BANK**

Your Trusted Advisors Since 1874



[woodhuston.com](http://woodhuston.com) Member FDIC



# BOARD OF DIRECTORS

## OFFICERS

**Dave Griggs\***  
President, Columbia

**Brad Jones\***  
First Vice President,  
Jefferson City

**John Fletcher\***  
Treasurer, Marshall

**Jennifer True\***  
Secretary, Arrow Rock

## DIRECTORS

**Ronnie Alewel**  
Sedalia

**Donna Huston**  
Marshall

**Edward Milbank**  
Chillicothe

**Denise Schisler**  
Moberly

**John Ashford (Emeritus)**  
Alexandria, VA

**David Jonas**  
Marshall

**Carrie Peecher, D.O.**  
Arrow Rock

**Bea Smith, Ph.D.\***  
Columbia

**Elizabeth Bellamy, J.D.\***  
Marshall

**Michael Kateman**  
Arrow Rock

**Kevin Riggs**  
Marshall

**Lori Wightman**  
Sedalia

**Doug Crews**  
Columbia

**Peter Kingma\***  
Chicago

**James Roller, M.D.**  
Columbia

**Larry Willen**  
St. Charles

**Jennifer Gordon**  
Columbia

**John Landrum\***  
Columbia

**Vicki Russell**  
Columbia

Executive  
Committee\*

A 501 (c) (3) Nonprofit Organization

## FROM THE ARTISTIC DIRECTOR

It's a season of new beginnings! We are thrilled to welcome an incredible group of staff members and a fantastic gaggle of artists from around the world. As I step into my first full season as artistic director here at ARLT—now in its 65th year of bringing Broadway-caliber theatre to mid-Missouri—I am filled with excitement and gratitude.

For me, the magic of theatre began with the Aileen Quinn "Annie" film. We even had it on vinyl and cassette tape, and my sisters and I slept, ate, and breathed it in. Now, 50 years later, "Annie" continues

to inspire new generations, reminding us of the power of hope, hard work, and never giving up on our dreams—whatever they may be. It's a story where a mutt can become a millionaire, a girl can find her true happiness, and the American values of grit, perseverance, and optimism shine through every challenge. Annie herself inspired me to never give up on the dream of tomorrow.

So lean forward, embrace the music, the laughter, and the heart, and join us on this journey. Let Annie's timeless hope spark something in you, and remember—dreams do come true!

Welcome to the magic. Welcome to ARLT.



Robyne Parrish



inside  
**columbia**  
magazine

Living, Working & Having Fun  
in Columbia, Missouri

[insidecolumbia.net](http://insidecolumbia.net)

Arrow Rock Lyceum Theatre presents



**THE BROADWAY MUSICAL**

Music by  
Charles Strouse

Lyrics by  
Martin Charnin

Book by  
Thomas Meehan

Originally directed on Broadway  
by Martin Charnin

Based on "Little Orphan Annie"  
By Permission of Tribune Content Agency, LLC

Originally produced by The Goodspeed Opera House Michael P. Price, Executive Director

Presented on Broadway by Mike Nichols

Produced By Irwin Meyer, Stephen R. Friedman, Lewis Allen

Alvin Nederlander Associates, Inc. The John F. Kennedy Center for the Performing Arts, Icarus Productions.

Director  
STEPHEN SANTA

Choreographer  
TRENT SOYSTER

Music Director  
MATTHEW GOINZ

Animals By  
WILLIAM BERLONI THEATRICAL ANIMALS

Scenic Designer  
NORA MARLOW SMITH

Costume Director  
GARTH DUNBAR

Lighting Designer  
CHRISTOPHER BRUSBERG<sup>†</sup>

Sound Designer  
GIANNA AGOSTINO

Production Stage Manager  
TONY DEARING\*

Assistant Stage Manager  
KATY McGLAUGHLIN\*

Any video and/or recording of this production is strictly prohibited.

The role of Annie underwritten by  
**Peter Kingma  
& Thom Lambert**

The role of Miss Hannigan underwritten by  
**STUDIO HOME**  
the shop • framing • interior design

The role of Sandy underwritten by  
**BLUMHORST**  
VETERINARY HOSPITAL



\* Appearing through an Agreement between  
Arrow Rock Lyceum Theatre and Actors' Equity  
Association, the Union of Professional Actors  
and Stage Managers in the United States.



\*\* The director is a member of  
the **STAGE DIRECTORS AND  
CHOREOGRAPHERS SOCIETY**,  
a national theatrical labor union.



UNITED  
SCENIC  
ARTISTS

# Supporting The Lyceum Theatre

Since 2006, LammTech has proudly supported the Lyceum Theatre by managing its technology investments.

From resolving issues quickly to offering expert guidance, we help their operations run smoothly—so they can focus on what they do best: ***delivering unforgettable performances.***

At LammTech, we've been building lifelong partnerships rooted in trust, knowledge, and integrity since 1999.

## **OUR STRATEGY IS SIMPLE:**

We prioritize what's best for our clients—always. No matter your business goals, you'll reach them faster with LammTech.



*We invite you to connect with us to learn more about our process and how we can help you grow.*

660.827.9944  
[www.lammtech.com](http://www.lammtech.com)

## CAST OF CHARACTERS

Annie Mudge-Warbucks .....	AVA BARTLETT
Oliver Warbucks .....	ERICK PINNICK*
Miss Hannigan .....	ANGIE SCHWORER*
Grace Farrell/Dog Handler .....	ROCHELLE SCUDDER*
Rooster Hannigan .....	CONNER JOHN GILLOOLY*
Lilly St. Regis .....	MEADOW TIÊN NGUY*
FDR .....	ALAN KNOLL*
Dog Catcher/Ickes/Judge Brandeis .....	JACK KALAN
Lt. Ward/Jimmy Johnson/Morganthau .....	CHANCE INGALLS
Bert Healey/Hull/Eddie .....	SAM O'NEILL
Drake/Fred/McCracken/Bundles .....	ROB JAMES
Sound Effects Man/Howe/Asst. Dog Catcher .....	JERRY PINKARD III (JD)
Apple Seller/Mrs. Greer/Perkins/Dance Captain .....	JULIA RIPPON*
Mrs. Pugh/Connie Boylan/Sophie the Kettle .....	RAYNA KEY
Annette/Bonnie Boylan/F4 Ensemble .....	DEVIN MCCALL
Cecile/Star To Be/Ronnie Boylan .....	KAYLEE ANN HENDRY
Duffy .....	CLAIRE LEBECK
July .....	CLARA JO JOLLEY
Pepper .....	MORGAN BAUM
Tessie .....	LUCY SCOTT
Kate .....	ALTA WEBEL
Molly .....	WINNIE MILLNER
Clara/Annie Cover .....	ELSIE EBBEN
Mabel .....	STELLA BROWN
Rosie .....	RUTH OTTEN
Millie .....	ELLIE POWERS

## MUSICIANS

Conductor/Keyboard 1 .....	MATTHEW GOINZ	Trumpet .....	JOHN PERKINS
Keyboard 2 .....	BRÓEDYGEARY	Trombone .....	TITUS WEINZIERL
Reed 1 .....	LUCAS WILLISIE	Guitar .....	JAMISON JEFFRIES
Reed 2 .....	ENOLA-RIANN WHITE	Bass .....	MATT SCHMITZ
Electronic Wind Instrument .....	CRAIG YOUNG	Drums .....	MATT FETTERLY
Violin .....	ALISON LANKHEIT		



\* Appearing through an Agreement between Arrow Rock Lyceum Theatre and Actors' Equity Association, the Union of Professional Actors and Stage Managers in the United States.

PROUD 2026 SEASON SPONSOR



# Hereth Insurance Consulting

**simple human sense**

***Auto-Owners***  
INSURANCE

**Independent. Local. Invested in You.**

**Professional. Detailed. Relationship-driven.**

**Coverage design | exposure review | carrier negotiation | renewal planning**

Built for businesses and organizations that require thoughtful risk strategy.

**573-475-4015 | [HerethInsuranceConsulting.com](https://www.HerethInsuranceConsulting.com)**

Columbia, Missouri | Commercial insurance and specialty risk advisory

# MUSICAL NUMBERS

## ACT ONE

December 11-19, 1933

### The New York Municipal Orphanage (Girls ' Annex)

"Maybe" ..... Annie

"Hard-Knock Life/Hard-Knock Life" (Reprise) ..... Annie, Orphans

### St. Mark's Place

"Tomorrow" ..... Annie

### A Hooverville Under the 59th Street Bridge

"Hooverville" ..... Ensemble, Sophie, Annie

### The Orphanage

"Little Girls/Little Girls" (Reprise) ..... Miss Hannigan

### The Warbucks Mansion at Fifth Avenue and 82nd Street

"I Think I'm Gonna Like It Here" ..... Grace, Annie, Ensemble

### New York City

"N.Y.C." ..... Oliver Warbucks, Grace, Annie, Ensemble

### The Orphanage

"Easy Street" ..... Miss Hannigan, Rooster, Lilly

### Warbucks' Study

"You Won't Be an Orphan for Long" ..... Oliver Warbucks, Grace, Drake,  
Annie, Ensemble

- Fifteen Minute Intermission -

## ACT TWO

December 21-25, 1933

### The NBC Radio Studio at 30 Rockefeller Center and the Orphanage

"You're Never Fully Dressed (Without a Smile)" ..... Bert Healy, The Boylan Sisters

### The Orphanage

"You're Never Fully Dressed (Without a Smile)" ..... Orphans

"Easy Street" (Reprise) ..... Miss Hannigan, Rooster, Lilly

### Washington: The White House

"Tomorrow" (Reprise) ..... Annie, Ickes, Perkins, F.D.R.

### The Great Hall at the Warbucks Mansion

"Something Was Missing" ..... Oliver Warbucks

"I Don't Need Anything But You" ..... Annie, Oliver Warbucks,  
Grace, Ensemble

### The East Ballroom of the Warbucks Mansion

"Maybe" (Reprise) ..... Annie

"New Deal for Christmas" ..... Company

STREAM  
ANYTIME,  
ANYWHERE

KMOS  
 PBS

WATCH NOW

WITH THE FREE PBS APP\*

\*Local PBS station membership required to access some content.



Watch free with the KMOS PBS app. As a member, stream with KMOS PBS Passport to get the most out of your membership.

KMOS  Passport

[kmos.org](http://kmos.org)



## DIRECTOR'S NOTE

As "Annie" celebrates its 50th anniversary, I find myself thinking about the countless young people who have been inspired by this story, myself included. There is something truly special about the way this show invites audiences to step into a world of imagination, hope, and possibility.

"Annie" was, in fact, the very first show I ever directed back in fourth grade. I still remember the joy, the chaos, and the look on my teacher's face when I pitched the idea during recess.

"Annie" reminds us to lead with optimism, resilience, and a belief in something brighter ahead. That spirit lives in every young artist who takes the stage.

I am honored to join the Arrow Rock family and to collaborate with Robyne Parrish in what promises to be a remarkable season. I hope that somewhere in this audience, a young person feels the same spark I did years ago, and carries it forward into a life shaped by creativity, courage, and connection.



Stephen Santa

## MEET THE CAST



### AVA BARTLETT | Annie

Ava is currently an eighth grader. She has recently been seen in some of her favorite roles as Summer Hathaway "School of Rock" (Starlight Theatre), "Annie" (Springfield Little Theatre), Martha "Dickens Christmas Carol" (Silver Dollar City), Minnie "Little Women" (Evangel University), and "Google" (Springfield Symphony). She would like to thank Stephen Santa and Robyne Parrish for giving her this opportunity to step into the beautiful world of "Annie," and also Brandon Russell for being her vocal coach.



### MORGAN BAUM | Pepper

Morgan just completed ninth grade at Springfield Little Theatre Academy. She has performed with SLT for over 11 years, and her most recent credits include Annie "Annie," Thing 2 "Seussical The Musical," Flounder "The Little Mermaid," Sally Brown "You're a Good Man Charlie Brown," and Featured Dancer/Middle Anna "Frozen" and "Frozen Jr." Morgan has formal training in ballet, tap, jazz (and more), and competes with SLT's Illumination Dance Company. She studies voice with Mark Lawley at Lawley Studios and has trained with Broadway Artists Alliance (BAA) in NYC. Morgan is over-the-moon excited to play Pepper as part of the ARLT cast of "Annie" in beautiful Arrow Rock! She would like to thank her parents, family and friends for their support and encouragement, as well as her instructors and mentors back in Springfield. Special thanks to the Lyceum staff for this incredible opportunity to debut on a regional stage!



### STELLA BROWN | Mabel

Stella is thrilled to take the stage in "Annie"! A 13-year-old from Columbia, Missouri, she attends Jefferson Middle School and appeared in her first musical three years ago. Her favorite past roles include Young Elsa in "Frozen" at the Lyceum, Matilda in "Matilda Jr.," Chip in "Beauty and the Beast," and Young Daisy/Young Jeremy in "Snow White and Me." Stella is also featured on the upcoming cast album of "Snow White and Me," recorded with the Conservatory for the Performing Arts at Stephens College. Stella trains in voice and dance, and when she's not on stage, she enjoys playing guitar and listening to music.

# 100,000 WATTS

## KPOW FM

# POWER 97.7

[WWW.POWER977.COM](http://WWW.POWER977.COM)

*Yesterday's Power Hits with all of today's important news and information from around the area and across the state. The national news you need, with up-to-the-minute weather, sports and music!*

*Power 97 and Your Country 98.5 are your locally-owned and operated radio stations serving Pettis and Johnson counties along with over 40 more across Mid-Missouri.*

*Set your dial to 97.7 FM for the POWER!*

## 50,000 WATTS

### YOUR COUNTRY

# 98.5

## THE

# BAR

[WWW.WARRENSBURGRADIO.COM](http://WWW.WARRENSBURGRADIO.COM)



**KPOW | KDRO • 301 S. OHIO, SEDALIA, MO • 660-826-5005**  
**KWKJ | KOKO • 800 PCA RD., WARRENSBURG, MO • 660-747-9191**

## MEET THE CAST



### **ELSIE EBBEN | Clara/Annie Cover**

Elsie is currently in sixth grade and is thrilled to be part of this production. Some of her previous credits include "Alice in Wonderland" (Alice) at Lincoln Community Playhouse, "Matilda the Musical" (Matilda) at TAFK, "Mean Girls Jr." (Cady) at Moore Theatre, "The Best Christmas Pageant Ever: The Musical" (Beth Bradley) at Lincoln Community Playhouse and "Finding Nemo Jr." (Nemo) at Nebraska Communities Playhouse. Elsie would like to thank the entire Lyceum team for giving her the opportunity to make her professional theatre debut, as well as her family and friends for their constant support. She also sends a special thank you to her vocal coaches, Ginna Claire Mason and Christina Docter. Enjoy the show!



### **GEORGIE | Sandy**

Georgie was adopted in the spring of 2022 by Bill Berloni from a private owner, and his story mimics Sandy's. Georgie's handler, Rochelle Scudder, was volunteering at a shelter in her hometown when a man arrived with Georgie. He was caring for Georgie after his original owner became terminally ill, but it became too much to manage with his own dogs and ailing mother. The shelter turned him down because they had a waiting list, but Rochelle intervened. She said, "If you give me 24 hours, I may have a home for him." Twenty-four hours later, he was at his forever home with the Berlonis, where he would begin his rise to canine stardom. Georgie's first job was starring in the National Tour of "Annie" in 2023. Since then, he has done several regional productions and an independent film, most of them with Rochelle by his side as his handler.



### **CONNER JOHN GILLOOLY\* | Rooster Hannigan**

Conner is making his Lyceum Theatre debut! Previous credits include Dewey Finn in Andrew Lloyd Webber's "School of Rock the Musical" (Broadway, International Tour), "Dani Girl" (Edinburgh Fringe Festival), "Beautiful: the Carole King Musical" (Flat Rock Playhouse). TV/Film: "FBI: Most Wanted" (CBS), "The Equalizer" (CBS). Special thanks to the creative team, cast and crew here at the Lyceum Theater. Love to Raggie and Marty!



### **KAYLEE ANN HENDRY | Cecile, Star To Be, Ronnie Boylan**

Kaylee is overjoyed to be making her Arrow Rock debut! She just recently graduated from University of North Carolina School of the Arts with her BFA in Acting. Similar to the Star-To-Be, she just moved to NYC to pursue her dreams of stardom! She would like to thank her parents, Robyne Parrish, Karrie Kopel, Stephen Santa, Trent Soyster, Ken Martinez and the entire creative team of Arrow Rock for giving her this opportunity and continuing to pour into the arts with so much passion and grace. Her past theatre credits include Lauren in "Kinky Boots" at Weathervane Playhouse, Jovie in "Elf" at Alhambra Theatre and Dining, and Queenie in "The Wild Party at UNCSA." Also feel free to follow her on Instagram to see what she's up to @kayleehendry



### **CHANCE INGALLS | Lt. Ward, Jimmy Johnson, Morganthau**

Chance Ingalls is so honored to be joining Arrow Rock Lyceum's 65th season! He's from Kapolei, Hawaii, and earned a bachelor of music in music theatre from Oklahoma City University. Some previous works include the Broadway National Tour of "Annie" ('23-24), "The Addams Family" (Gateway Playhouse), and "Footloose" (Engeman Theatre). He is so grateful for the people in his life who support him. Couldn't do it without them!



## The Little Blue Cottage

Cozy two bedroom, two bath cottage with many amenities including jet tub, WiFi, kitchen, washer/dryer and outside patio. Sleeps up to four. Just in view to the entrance of town.

Cash or check.

Call 660-837-3627 to reserve  
[TheLittleBlueCottage.net](http://TheLittleBlueCottage.net)



## Arrow Rock State Historic Site

### VISITOR CENTER HOURS

March - Nov.

10 a.m. to 4 p.m. Daily

Dec. - Feb.

10 a.m. to 4 p.m. Fri., Sat., Sun.

[mostateparks.com](http://mostateparks.com) • 660-837-3330



## LAFAYETTE

ON THE SQUARE

LaFayette on the Square offers a vibrant Cajun-inspired menu that blends bold Southern flavors with thoughtfully selected, locally sourced ingredients, all complemented by a full bar featuring handcrafted cocktails, wine, and regional favorites.



### HOURS

Wednesday & Thursday 11:00 AM - 2:00 PM / 4:30 PM - 8:00 PM

Friday 11:00 AM - 2:00 PM / 4:00 PM - 9:00 PM

Saturday 11:00 AM - 9:00 PM

Sun-Tue. CLOSED

104 North Church St., Fayette, MO | (660) 728-6485 | [lafayetteonthesquare@gmail.com](mailto:lafayetteonthesquare@gmail.com)



## MEET THE CAST



### **ROB JAMES | Drake, Fred, McCracken, Bundles**

A Pittsburgh native, Rob is so thankful to spend some time here in Arrow Rock, as well as greater Missouri! Some of his favorite roles have been Ebenezer Scrooge in "A Christmas Carol" (Pittsburgh Musical Theatre), King Arthur in "Spamalot!" and Dave in "The Full Monty" (Stage 62 in Carnegie, Pennsylvania). When not teaching acting (the Pittsburgh CLO Academy for Musical Theatre), he also directs in the Pittsburgh area, with recent credits including "Sunday in the Park with George" and "Falsettos" (Front Porch Theatricals) and "Oklahoma!," "9 to 5," and "Dogfight" (Stage 62). His slate of projects for the rest of the year includes ... "Spelling Bee" (CLO Academy), "Gypsy" (Stage 62), a new work for Pittsburgh's Becoming Arts Collective and, of course, a holiday season filled with the joy of \*helping\* Santa! Many thanks to the 412 folks here, Robyne, Stephen, and Conner, as well as to my family and friends.



### **CLARA JO JOLLEY | July**

Clara Jo Jolley is delighted to be part of this production. She has a deep love for the stage and has enjoyed performing in a variety of roles, including Young Bonnie in "Bonnie and Clyde," Marta in "The Sound of Music," Young Kangaroo in "Seussical," Susan Waverly in "White Christmas," and Cruella in "101 Dalmatians." Each experience has strengthened her passion for musical theatre and storytelling. Clara Jo also enjoys singing, dancing and spending time with friends and family. She is grateful to use her gifts and talents in meaningful ways. Known for her joyful spirit and kind heart, she appreciates the support of her family, friends, and directors who inspire her to keep pursuing her dreams. She hopes you enjoy the show!



### **JACK KALAN | Dog Catcher, Ickes, Judge Brandels**

Jack is ecstatic to be back at the beautiful Lyceum Theatre! He works locally around Saint Louis as an Actor, Lighting Designer, and Fight Choreographer, among wearing many other hats. When he isn't working, he loves seeing local shows, playing pickleball with his friends, late night karaoke, and the occasional skydive. Huge thanks to his friends and family who have always supported him throughout this crazy journey. Check out his website, [Jackkalan.com](http://Jackkalan.com), for updates. Thank YOU for coming to see LIVE theatre!



### **RAYNA KEY | Mrs. Pugh, Connie Boylan, Sophie the Kettle**

Rayna Key makes her professional debut in this production. She is currently pursuing a degree in theatre performance at the University of Missouri, where she continues to develop her skills in acting, voice and movement. She recently appeared as Little Red Riding Hood in their production of "Into the Woods." First-place winner of KC SuperStar, Rayna brings a strong vocal background and a passion for connecting with audiences through performance. She is dedicated to growing as a performer and pursuing a professional career on the stage. Rayna would like to thank her family, friends and mentors for their unwavering support.



CIRCA  
1865

**BORGMAN'S  
BED  
&  
BREAKFAST**

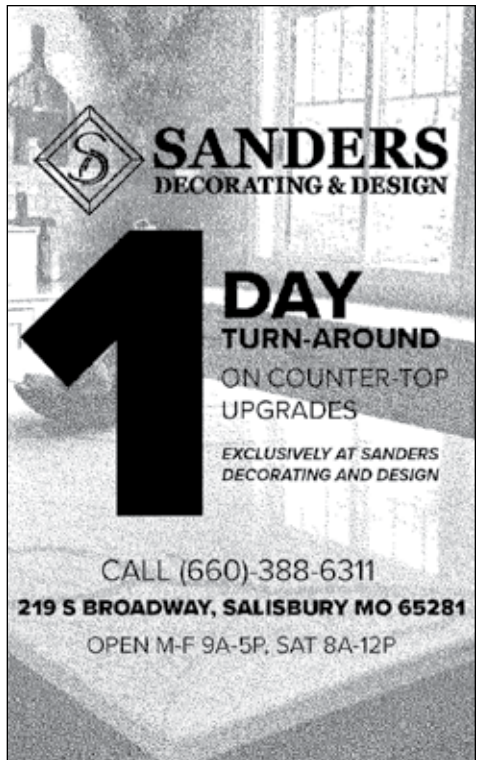





**Full breakfast**  
*featuring homemade cinnamon rolls*

- 2 Rooms, private baths -  
 kborgman@iland.net  
 660-837-3350  
 Find us on Facebook

"Comfortable and homey"





**SANDERS**  
DECORATING & DESIGN

1

**DAY**  
TURN-AROUND  
ON COUNTER-TOP  
UPGRADES

*EXCLUSIVELY AT SANDERS  
DECORATING AND DESIGN*

CALL (660)-388-6311  
**219 S BROADWAY, SALISBURY MO 65281**  
 OPEN M-F 9A-5P, SAT 8A-12P

## Get a FREE Welcome Gift

**New Resident?**



To receive your free gift, text  
**"WELCOME"** to **573.312.0628** or scan  
 the QR code



**New Business?**



To receive your free welcome gift, text  
**"CONNECT"** to **573.312.0628**, or scan  
 the QR code



Locations:  
**Columbia/MidMO  
 Cooper County**

Is your location not  
 listed?  
 Launch a Connection  
 Exchange location  
 in your community.

## Looking to grow your business?

**Join today to feature your business in our welcome gifts!**

**Our welcome gifts help create valuable opportunities for businesses to connect and build lasting relationships with new customers.**

Email us at [info@connection-exchange.com](mailto:info@connection-exchange.com) with title LYCEUM or go to [www.connection-exchange.com/membership](http://www.connection-exchange.com/membership)

**Memberships  
from \$300  
per year!**



the  
connectionexchange  
we connect you

## MEET THE CAST



### ALAN KNOLL\* | FDR

Alan Knoll is thrilled to be part of the Arrow Rock Lyceum Theatre's 65th season! Past Lyceum productions include "Noises Off" (Selsdon), "Cinderella" (Sebastian), "The Little Mermaid" (Grimsby), "Singin' In The Rain" (Roscoe), "Barefoot in the Park" (Velasco), "Dracula" (Renfield), "Harvey" (Elwood), "Elvis The Musical" (Col. Tom Parker), and "The Mousetrap" (Major Metcalf). Other favorite roles include Charlie Aiken in "August: Osage County" (Repertory Theatre of St Louis), all the residents of Bedford Falls in "This Wonderful Life" (Dramatic License - Best One-Person Show, *Riverfront Times*), and George in "Who's Afraid of Virginia Woolf" (Muddy Waters - Best Actor, *Riverfront Times*). He was honored to serve as the Lyceum's interim artistic director last year, and is doubly honored to be part of Robyne Parrish's first season! He, his wife Laurie, and their pup, Truman, are proud residents of Montgomery, Alabama.



### CLAIRE LEBECK | Duffy

Claire is very excited to be making her debut at the Arrow Rock Lyceum Theatre. She has been involved in theatre for eight years and has been seen in many productions at Springfield Little Theatre, Evangel University, and Parkview High School. Some of her favorite performances include: "The Sound of Music" (Louisa), "Junie B. Jones The Musical, Jr." (Junie B. Jones), "School of Rock" (Marcy), "Annie" (July), and "Fiddler on the Roof" (Bielke). Claire is thrilled to be playing the part of Duffy with this amazing cast. In her free time she enjoys baking, crafting, and playing the guitar. Special thanks to her family and Mr. Mark Lawley for their continued support and encouragement, as well as everyone at the Lyceum for this amazing opportunity.



### KASEY LYNCH | Understudy/Swing (Grace, Star to Be, Ensemble)

Kasey Lynch is excited to be working with the Lyceum Theatre for the first time this summer as an understudy/swing in "Annie," "1776," and "Into the Woods." She graduated from Mizzou with her Ph.D. in Theatre and Performance Studies and is currently a visiting assistant professor of theatre at the University of Central Missouri. She was most recently seen on stage in the MU Larry D. Clark Summer Rep productions of "Little Shop" (Audrey) and "9 to 5" (Judy Bernly). She would like to thank her family, friends, and mentors for their endless support!



### DEVIN MCCALL | Annette, Bonnie Boylan, Ensemble

Devin is so excited to be a part of this incredible company! Selected favorite credits include: Sarah Brown in "Guys and Dolls" (Priscilla Beach Theatre), Ensemble/Miss Honey u/s in "Matilda the Musical" (Virginia Stage Co.) Lila in "Massacre" (Sheen Center), Ursula in "Much Ado About Nothing" (Commonwealth Shakespeare Co.), Parson van Houten in "The Legend of Sleepy Hollow" (Greenbrier Valley Theatre), Elsa Schraeder in "The Sound of Music" (Milton Theatre), and Mona in "Dames at Sea" (Priscilla Beach Theatre). Graduate of Pace University, BFA Acting. Much love to the entire Lyceum team, my family and Matt for their support. IG: @devin\_mccall



### WINNIE MILLNER | Molly

Winnie Millner is thrilled to make her stage debut as Molly in "Annie"! A spunky, passionate, and thoughtful 6-year-old, Winnie brings boundless energy and imagination to everything she does. Winnie has taken youth acting classes at TRYPS and has been dancing at Columbia Performing Arts since she was 2. Offstage, she can be found scoring goals on the soccer field, swimming like a fish, and stopping at Starbucks whenever she can. Winnie would like to thank her older sisters Everly and Rowan for bringing her into the theatre world, along with her big, loud, supportive family, friends who feel like family, and her wonderful orphan sisters for welcoming her and cheering her on. She is grateful to Stephen Santa and the Lyceum Theatre for this wonderful opportunity.

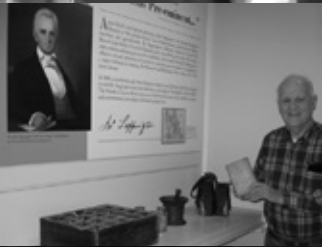


ARROW ROCK  
GHOST  
TOURS

# ➔ ||| MORE TO

FROM FESTIVALS TO CELEBRATIONS, THIS  
HAS PLENTY TO OFFER INCLUDING ENTERTAINMENT

..... EXPERIENCE IT ALL





# EXPLORE ||| ←

NATIONAL HISTORIC LANDMARK VILLAGE  
DINING EVENTS AND HISTORICAL LOCATIONS.

ARROWROCK.ORG .....





## ARROW ROCK CRAFT SHOP

**A local destination for over 60 years.**

*Shop our handmade crafts and goodies — all by local artisans.*

*Open weekends spring and fall, Wednesday-Saturday in summer.*

West of the Boardwalk.

**660-888-1410**

## THE PERFECT DATE NIGHT in Glasgow, Missouri



*Beckett's Restaurant & Beckett's Winery*



*510 First Street,  
Glasgow, MO 65254*

Tuesday - Thursday

11:00am-8:00pm

Friday - Saturday

11:00am-9:00pm

**(660) 338-9978**

*515 First Street,  
Glasgow, MO 65254*

Wednesday - Friday

12:00pm-8:00pm

Saturday

11:00am-8:00pm

Sunday

12:00pm-5:00pm

**FOR LIVE MUSIC VISIT:  
[facebook.com/beckettswinery](https://www.facebook.com/beckettswinery)**



## Missouri River Farmers Inn

- MRF Inn on Airbnb -

603 Main Street  
Arrow Rock, MO 65320

Contactless Entry - Contactless Stays

- 3 Suites with Kitchenettes-
- Cottage with Full Kitchen-
- Carriage House with Full Kitchen-



## MEET THE CAST



### MEADOW TIÊN NGUY\* | Lily St Regis

Meadow has been seen at "Interstellar Cinderella" at NYCCT, Ella "Cinderella"; at North Shore Music Theatre, Hope Harcourt "Anything Goes"; at City Springs Theatre Company, Betty Haynes "White Christmas"; and Rachel "Escape to Margaritaville" at The John W. Engeman Theater; Ariel "The Little Mermaid" at Arrow Rock Lyceum Theatre; Shelby "Steel Magnolias" at North Carolina Theatre. Awarded the 2012 High School Musical Theatre Jimmy Award Winner in Chicago. Film/TV: "The Blacklist," "The Artist's Wife," "Law and Order SVU," "Madam Secretary," and "Hunters." BFA from Indiana University. [www.meadownguy.com](http://www.meadownguy.com) @meadow\_nguy



### SAM O'NEILL | Bert Healy, Hull, Eddie

Sam (he/him) is thrilled to be a part of "Annie" here in Arrow Rock. Sam has recently graduated with a BFA in musical theatre from the University of Michigan. He's represented by, and wishes to thank The Hybrid Agency. He also thanks Ann Evans Watson, and his brother Bowie. Select professional credits include: "Rent" (Roger), "Rock of Ages" (Drew), "Angels in America Part 1," "Millennium Approaches" (Prior), "Newsies" (Jojo/Darcey), "Jersey Boys" (Tommy DeVito), Rodgers & Hammerstein's "Cinderella" (Prince Topher). Insta: @sj.oneill



### RUTH OTTEN | Rosie

Ruth is a rising fourth grader at Hallsville Intermediate School and an active member of TRYPS Children's Theater in Columbia, Missouri. She has delighted audiences in roles such as the Queen of Hearts in "Alice in Wonderland Jr." (2026), and Young Kangaroo in "Seussical Jr." (2025), and has also appeared in youth ensemble roles in Hallsville High School's productions of "Beauty and the Beast" (2024) and "Seven Brides for Seven Brothers" (2025). Ruth is honored and thrilled to be a member of the orphan ensemble in "Annie" at Arrow Rock Lyceum this season.



### JERRY "JD" PINKARD III | Sound Effects Man, Howe, Asst. Dog Catcher

Jerry Pinkard III is extremely proud to be joining Arrow Rock Lyceum Theater this summer. Jerry lives in Dallas, Texas, with his family and attends Missouri State University, pursuing a BFA in Musical Theatre. Some roles that he's played include Seymour Krelborn "Little Shop of Horrors," Mr. Black "Wild Party," Will Bloom "Big Fish," and many more! Jerry is very grateful about this opportunity, especially with it being his professional debut, and is so excited to be working with such a wonderful cast of talented performers.



### ERICK PINNICK\* | Oliver Warbucks

Erick is excited to return to Arrow Rock after playing Julian Marsh in "42nd Street" in 2024! He recently toured the United States in the musical "Shucked." Other tours include "Summer: The Donna Summer Musical," "Sunset Boulevard" starring Petula Clark, and a European tour as Pilate in "Jesus Christ Superstar." Regional credits include the titular role in "Sweeney Todd" at Trinity Repertory Company, Nick/Doug in "Come From Away" at the Asolo Repertory Theatre, Principal Hawkins in "The Prom" at Sharon Playhouse, and Booker T. Washington in "Ragtime" at Broadway Sacramento. He has appeared in NYC in Susan Stroman's "A Christmas Carol" at Madison Square Garden starring Frank Langella, and in Roundabout Theatre Company's "The Tin Pan Alley Rag." TV credits: "EVIL," "The Blacklist," and "The Good Fight." He is a graduate of James Madison University and a proud member of Actors' Equity Association.

# VILLAGE GIFTS

- ESTABLISHED 2024 -

*Visit us*

*for toys, puzzles, books, Christian gifts, jewelry,  
tea towels, and more! We are also the official retailer  
in Arrow Rock for Lyceum Theatre products!*

On the Board Walk  
312 Main Street

Bring in the program from today's  
performance and receive 25% off one item!

# *Alweil's*

## COUNTRY-MEATS

Mon-Sat 8-5 Fri 8-6  
660-747-8261



### ***FOUR GENERATIONS AND VETERAN OWNED***

- **Fresh Meat Case & Full Deli**
- **Hand Cut USDA CHOICE+ Grade Steaks**
- **National Award-Winning Bacon**
- **Artisan Crafted Sausages & Jerky**
- **Freshly Made Missouri Ground Beef**
- **Grand Champion Cured & Smoked Meats**

***"BACON DREAMS COME TRUE, SINCE 1932"***

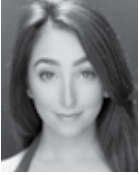
911 N. Simpson Dr., Warrensburg, MO 64093 • 800-353-8553

## MEET THE CAST



### ELLIE POWERS | Millie

Ellie is a seventh grader at Southern Boone Middle School. She is a member of TRYPS Children's Theater located in Columbia, Missouri, and has been a part of "Beauty and the Beast" (Chip), "Annie" (Annie), "The Addams Family" (Ancestor), "Elf" (Charlie), and "Seussical" (Young Kangaroo). This is her third production here at the Lyceum: "Frozen" (Young Anna) and "A Christmas Carol" (Lucy Cratchit). She dances with Columbia Performing Arts Centre on their Ensemble competition team. Thank you to the Lyceum creative team for this amazing opportunity. Big shout out to Corey Dunne and the team at TRYPS! And a huge thank-you to my friends and family!



### JULIA RIPPON\* | Apple Seller, Mrs. Greer, Perkins, Dance Captain

Hershey, Pennsylvania native turned New Yorker. National Tour: "Waitress." Select Regional: "Waitress," Ogunquit Playhouse; "Footloose," Engeman Theater; "Rock of Ages," ACT & Argyle Theater; "Mamma Mia," SurfFlight Theater; "Meet Me in St. Louis," Theater Aspen; "Memphis," Scheaberle Studio; "Head Over Heels," "Schimmel Center. Pace University '21 BFA. Special thanks to Act One Management, and TScott! All of the love and gratitude to Mom, Dad, PJ, Eric, and R&R. To the moon and stars!  
@juliarippon



### ANGIE SCHWORER\* | Miss Hannigan

Broadway: "Some Like It Hot" (Minnie), "The Prom" (Angie), "The Producers" (Ulla), "Something Rotten," "Big Fish," "Catch Me if You Can," Young Frankenstein, "Annie Get Your Gun," "Chicago," "Sunset Boulevard," "Crazy For You," and "The Will Rogers Follies." Met Opera: "The Merry Widow" (Jou Jou). Regional: "Come From Away" (Bonnie), "Beautiful" (Genie Klein), "Crazy for You" (Irene), "42nd Street" (Dorothy Brock), "The Cher Show" (Georgia/ Lucille Ball), "Mamma Mia" (Tanya), "The Sting" (Mrs Hilliard), "Disaster the Musical" (Jackie), "Always a Bridesmaid" (Monette), "Chicago" (Roxie), "Sweet Charity" (Nikki), "Damn Yankees," (Lola), "The Full Monty" (Vicki), "Minsky's" (Ginger), "The Will Rogers Follies," (Z's Fav). TV: "Palm Royale," "Smash," "Law and Order: Criminal Intent," "Rosie O' Donnell Show," "Dana Carvey Show," "Queer Eye," "As the World Turns," "The Kennedy Center Honors." Film: "The Producers."



### LUCY SCOTT | Tessie

Oh my goodness! Lucy Scott is delighted to be back at the Arrow Rock Lyceum Theatre this summer for "Annie: the Broadway Musical." This is Lucy's third show at the Lyceum Theatre, having appeared in 2025's "Frozen: The Musical" (Young Anna) and Charles' Dickens' "A Christmas Carol" (Debtor's Child / Want). She most recently threatened beheadings in a TRYPS production of "Alice in Wonderland" (Queen of Hearts) at Columbia Entertainment Company. She previously appeared in TRYPS productions of "Seussical Jr." (JoJo) and "James and the Giant Peach" (James), and in a Greenhouse Theatre Project production of "The Lion, the Witch, and the Wardrobe" (Lucy Pevensie) at Blue Bell Farm. Lucy attends Jefferson Middle School in Columbia. She enjoys riding horses, swimming, tennis, reading, and playing the cello. She would like to thank her family and friends for their love and support, and thanks the Lyceum for this opportunity.

# Timeless Rocheport



Where history,  
hospitality, and the  
Katy Trail come  
together.

Discover one of Missouri's  
most charming river towns.  
Historic streets, inviting shops,  
wineries and unforgettable  
lodging & dining, just steps  
away from the Katy Trail.

[rocheport-mo.com](http://rocheport-mo.com)



## We Like That Too!

1 Bottle, 2 Friends, & 3 Top Picks

### Frivolity...Uncorked!

@welikethatpodast



amazon



# Boonville

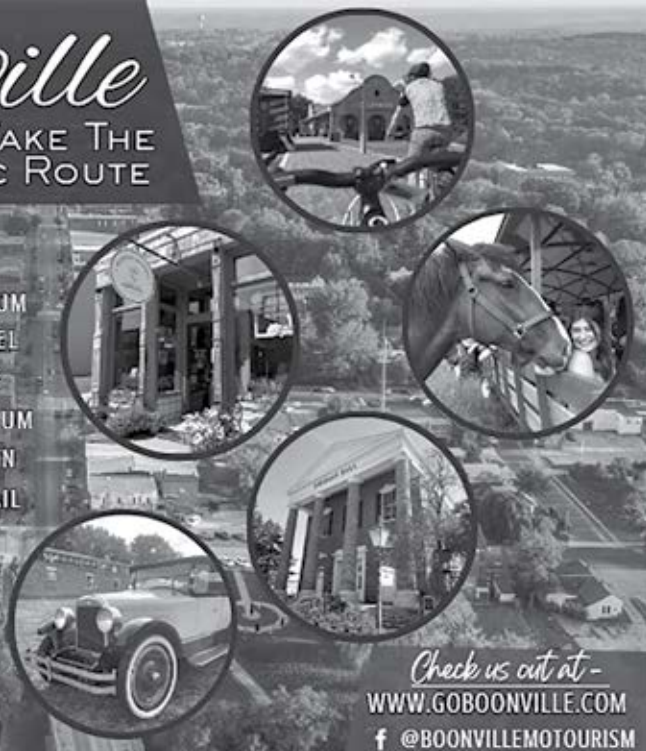


COME TAKE THE  
SCENIC ROUTE

WARM SPRINGS RANCH  
KATY TRAIL STATE PARK  
MITCHELL MOTORCAR MUSEUM  
ISLE OF CAPRI CASINO HOTEL  
HAIL RIDGE GOLF COURSE  
RIVER, RAILS & TRAILS MUSEUM  
SHOP HISTORIC DOWNTOWN  
BOONSLICK BARN QUILT TRAIL



BOONVILLE



Check us out at -

[WWW.GOBOONVILLE.COM](http://WWW.GOBOONVILLE.COM)

f @BOONVILLEMOTORISM

## MEET THE CAST



### ROCHELLE SCUDDER\* | Grace Farrell/Dog Handler

Rochelle is an actress-turned-animal handler for William Berloni Theatrical Animals, often appearing alongside her animal friends. She has trained a variety of animals for film, television, and theatre, including the Tony Award-winning Broadway production of "The Ferryman." Rochelle played Glinda in "The Wizard of Oz," Grace Farrell in "Annie," and Brooke Wyndham in "Legally Blonde," while simultaneously handling the show's canine stars. She has travelled the country teaching dozens of human actors to handle their animal co-stars for dozens of productions of "Legally Blonde," "Annie," "The Wizard of Oz," "The Wiz," and "A Christmas Story." Rochelle has supervised animal actors for "And Just Like That," "Search Party," and "Sesame Street" (MAX), "Life & Beth," "Fleishman Is in Trouble," and "Ramy" (Hulu), "Mr. & Mrs. Smith" (Prime Video), "The Village" (NBC), "High Maintenance" (HBO), "Almost Family" (FOX), "Bupkis" (Peacock), "Kaleidoscope" (Netflix), and the independent film "Hang Dog." @rochellesmith2026



### ALTA WEBEL | Kate

Alta Weibel is overjoyed to make her Lyceum Theatre debut in "Annie"! Recent credits include Gretl, "The Sound of Music" (Maples Repertory Theatre), as well as JoJo, "Seussical Jr, Encore" and Small Alice, "Alice in Wonderland Jr." at TRYPs Children's Theater. In her free time, she enjoys dancing, making art, or getting lost in a book. Alta sends a big thank-you to her parents, sisters Berit and Cora, and her extended family for their love and support!



Hours: Wednesday - Sunday, 8am - 3pm

517 Main Street, Arrow Rock | (660) 837-3173 | BinghamCoffeeHouse@gmail.com

**SC**

STEPHENS COLLEGE

the conservatory



# Join us for our 2026-27 season!



Oct. 2026

Oct.-Nov. 2026

Dec. 2026

Feb. 2027

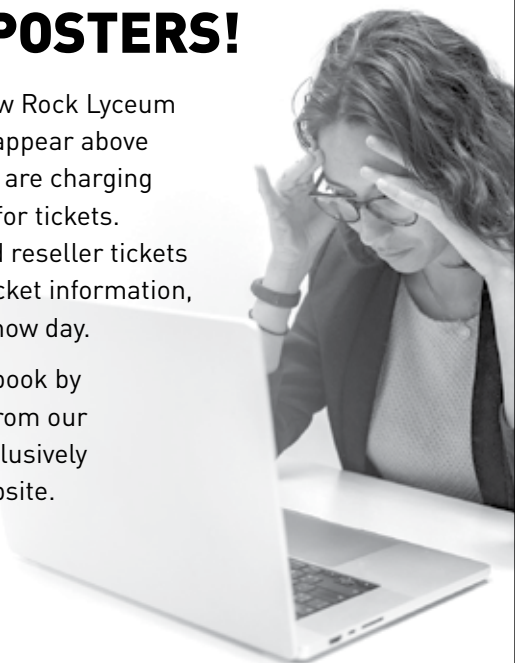
March 2027

April 2027

## BEWARE OF IMPOSTERS!

Ticket resellers are offering Arrow Rock Lyceum Theatre tickets on websites that appear above ours on search engines, and they are charging many times more than our price for tickets. Patrons who purchase overpriced reseller tickets often do not receive the proper ticket information, which can lead to confusion on show day.

Protect yourself and your pocketbook by purchasing your tickets directly from our box office at 660-837-3311 or exclusively from our [LyceumTheatre.org](http://LyceumTheatre.org) website.



## CREATIVE TEAM

**STEPHEN SANTA (Director)** is an award-winning theater director whose work has been seen across the United States and internationally. Stephen is the co-founder and former artistic director of Jumping Jack Theater—a children’s theater production company that creates original sensory theater experiences for audiences with developmental disabilities and sensory sensitivities. He received the Stand Out Moment Award in 2019 from the Stage Directors and Choreographers Society for his work with the company. His favorite recent credits include “Beautiful: The Carole King Musical,” “Little Shop of Horrors,” and “RENT,” which saw a seven-week sold-out run at the Omaha Community Playhouse, for which he is the former artistic director. “Mamma Mia!,” “Hedwig and the Angry Inch,” and “Avenue Q,” which were voted Best Local Theater Production by the Pittsburgh City Paper three years in a row. New York credits include “Abduction: A New Musical Comedy” for the New York Musical Festival (NYMF), “TEETH” (concert presentation) by Pulitzer Prize winner Michael R. Jackson, and “UNCHARTED: The Music of Anna K. Jacobs,” both at the famed Ars Nova Theater. Santa was the assistant director of the “Flashdance” national tour, the North American premiere of “The Monster in the Hall,” and “POP!” a new musical choreographed by Billy Porter at CITY Theatre, respectively. His production of “Dani Girl” by Kooman and Dimond traveled to the Edinburgh Festival Fringe in Scotland, where it received critical acclaim. He is the artistic assistant for Truworthy Productions, “Real Women Have Curves” [Broadway]. You can learn more about his work by visiting [StephenSanta.com](http://StephenSanta.com). For Bruce.

**TRENT SOYSTER (Choreographer)** is a Pittsburgh-raised, New York-based theater and dance artist. His work as an actor and director/choreographer has been seen worldwide at regional theaters, on tours, at theme parks and as an educator. National Tours: “Pretty Woman,” “Escape to Margaritaville.” Select favs: Pittsburgh CLO, The REV, John W. Engeman, Slow Burn Theatre Co, New London Barn, Argyle Theatre, Hersheypark, Timber Lake Playhouse, Broadway Cares, Edinburgh Fringe, Theatre Row and more. Associate casting director for Timber Lake Playhouse and guest faculty at Penn State Musical Theatre and Broadway Dance Center. Proud member of Actors’ Equity Association and associate member of the Stage Directors and Choreographers Society. BFA: Pace University, represented by CESD Talent. [trent.soyster](mailto:trent.soyster), [TrentSoyster.com](http://TrentSoyster.com)

**MATTHEW GOINZ (Music Director)** is a musician and theater performer whose work spans concert halls, theaters and recording studios from California to South Korea. Matt is the founding artistic director and principal conductor of The Sound Between®, a professional storytelling ensemble based in New York. As a vocalist, he can be heard on multiple Grammy-nominated recordings and has appeared recently at Carnegie Hall, Lincoln Center, the Kennedy Center, the Met Cloisters, The Breakers, Brooklyn Academy of Music, the Guthrie Theater, and 54 Below. Matt holds advanced degrees in conducting and makes his home in Hamilton Heights with his incredible partner—actor, singer, and crossover artist Sophie Amelkin—and their two rescues, Lucy (12) and Lenny (5 months). He is a proud member of AFM Local 802, AGMA, and Actors’ Equity, and considers himself a pretty good cook. He is so thrilled to be back in Arrow Rock for his third season. IG: [matthewgoinz](https://www.instagram.com/matthewgoinz)

**WILLIAM BERLONI (Animal Director and Trainer)** 2011 Tony Honoree for Excellence in Theatre. William found and adopted the original Sandy for the original production of “Annie.” Broadway: 33 shows which include “Gypsy” (with Audra McDonald) “Left On Tenth,” “The Crucible,” “Lady Day At The Emerson Bar And Grill” (starring Audra McDonald), “Annie” (original and all revivals), “Gypsy” (2023 revival), “A Christmas Story The Musical,” “Legally Blonde,” “Chitty Chitty Bang Bang,” “Alice In Wonderland,” “Oliver!,” “Anything Goes,” “The Wiz” and “The Wizard of Oz.” He has trained animals for hundreds of off-Broadway, regional theatre, tours, television and movies. He is the Head Animal Trainer of the new film “The Friend” starring Naomi Watts and a Great Dane he discovered in Iowa named Bing. Other television includes “Sesame Street,” “High Maintenance,” “The Village,” “Modern Love,” “Little Voice,” “Almost Family,” “Betty,” “Ramy,” “Mr. Robot,” “Russian Doll,” “Raising Kanan,” “Ghost,” “The Marvelous Mrs. Maisel,” “Girls5eva,” “Sand Dollar Cove,” “Noel Diary,” “Life And Beth,” “Inside Amy Schumer,” “Fleishman Is In Trouble,” “Harlem,” “Three Women,” “Kaleidoscope,” “Bupkis,” “Lady In The Lake,” “Only Murders In The Building” and all three seasons of “And Just Like That.” Mr. Berloni is the subject of Discovery the docu-series entitled “Wags To Riches With Bill Berloni.” Published author of Broadway Tails. Mr. Berloni is the Director of Animal Behavior at the Humane Society of New York. Follow us on Facebook and Instagram. [TheatricalAnimals.com](http://TheatricalAnimals.com).



# ARROW ROCK GHOST TOURS

HISTORY. MYSTERY. HAUNTINGS.  
JOIN US IF YOU DARE.

Arrow Rock, Missouri's history has its share of misfortune, tragedies, and nefarious characters. During this one-mile, two-hour walking tour through the village, your guides will share rarely told tales from the town's turbulent history, mixing in goosebump-inducing stories and evidence of lingering spirits.

## 2026 TOUR DATES:

Saturday, September 26  
Friday, October 2  
Friday, October 9

Friday & Saturday, October 16 & 17  
Friday & Saturday, October 23 & 24  
Friday, October 30

Get details and purchase tickets at:

[ArrowRockGhostTours.com](https://ArrowRockGhostTours.com)



## CREATIVE TEAM

**NORA MARLOW SMITH (Scenic Designer)** (she/her) is a Brooklyn-based multidisciplinary theatre designer. She is delighted to make her Arrow Rock Lyceum debut with longtime friend and collaborator Stephen Santa and the rest of this amazing creative team. Previous professional credits include: "Rooted" with WAM at Shakespeare and Co, "Once and A Sherlock Carol" at Capital Repertory Theatre, "The Onion: A New Opera" with Amherst College, continued work with New York companies MetaPhysed and The Mill Theatre, and many others. In addition to maintaining a design practice, Nora is a professor of Theatre Design and Technology at Adelphi University on Long Island. She holds an MFA in Stage and Costume Design from Northwestern University and a BA in English Literature from Mount Holyoke College. Keep an eye out for more work from Nora this summer on "Sweeney Todd" with Proctor's Collaborative School for the Arts and in Central City, Colorado with Le Nozze Di Figaro. @noramarlow

**GARTH DUNBAR (Costume Director)** The Lyceum was one of Garth's first professional jobs after graduating from Webster University, and he has been a part of many seasons at "The Rock" over the last 22 years. Based in St. Louis, he has worked with numerous area theatres, such as Opera Theatre of St. Louis, The Muny, Stages St. Louis, The Repertory Theatre of St. Louis, and Imaginary Theatre for Children, among others. Some Lyceum past favorites include "Disney's The Little Mermaid," "Cinderella," "Mamma Mia," "Murder on the Orient Express," and "Mary Poppins."

**CHRISTOPHER BRUSBERG (Lighting Designer)** is a lighting designer who focuses on storytelling through the use of style and collaboration. Chris is happy to return for his third season designing at Arrow Rock Lyceum. Based out of NYC, Christopher has worked with following companies over the past 15 years: EMERGE125 (company lighting designer - NYC), Annapolis Opera (resident lighting designer), Opera Lafayette (DC), Tri-Cities Opera, Syracuse Opera, BANDPotier (DC/NYC), Lyric Stage Company of Boston, Company One (Boston), The Cherry Arts Space (Ithaca), New Repertory Theatre, NYU Steinhardt, SUNY Purchase Voice and Opera, Boston Conservatory. Christopher is a proud member of USA829. For upcoming design work, check out his website: CTBLighting.com (he/him)

**GIANNA AGOSTINO (Sound Designer)** is excited to return to ARLT, her favorite theatre in the world. National: "Far Away" (UNC Charlotte, SETC Winner). Regional: "Bright Star," "42nd Street," "Legally Blonde," "Frozen" (Arrow Rock Lyceum). Kansas City: "The Inheritance Pts. 1 & 2," "Refuge" (Unicorn); "Man of La Mancha," "Godspell," "Carousel," "Rent" (Music Theatre Heritage); "About Alice," "Deathtrap" (Kansas City Actors' Theatre); "Everybody," "Pirates of Penzance" (UMKC); "Dead Man's Cell Phone" (Bell Road Barn Players). Radio: "Return to Dust," "Climate Change Theatre Action" (Kansas City Actors' Radio Theatre). @gianna\_agostino

**TONY DEARING\* (Production Stage Manager)** is very happy to be returning to The Lyceum for his 33rd season. He has stage managed for other theatres such as Alabama Shakespeare Festival, the Repertory Theatre of St. Louis, the New Theatre, Muny Student Theatre in St. Louis, and Arkansas Repertory Theatre.

**KATY MCGLAUGHLIN\* (Assistant Stage Manager)** (she/her) is an Arrow Rock native and thrilled to be living her childhood dream, ASM-ing at the Lyceum! The rest of the year Katy can be found at the University of Northern Iowa where she is the director of production for the Theatre Department. Katy has a BFA in stage management from the Sargent Conservatory at Webster University in St. Louis and an MFA in stage management from the University of Iowa. However, her most important education in stage management came from Tony Dearing. It is an honor to be working alongside you, Tony!

**BRÓEDY A. GEARY (Associate Music Director/Rehearsal Accompanist)** is a NYC-based music director, pianist and vocal coach. Music director of @shookandgearyproductions. He's grateful to be returning to the Arrow Rock Lyceum as associate music director and rehearsal accompanist! BFA Musical Theatre, Marymount Manhattan. BroedyGeary.com

.....

# UP NEXT

.....

*Thank you for attending ANNIE!*  
PLEASE JOIN US FOR THESE AMAZING SHOWS TOO!



Jun 26 - Jul 5



The original founding  
fathers musical!



FIND OUT MORE!

.....

# COMING SOON

.....



Jul 17 - Jul 26



Aug 14 - Aug 23



Sep 4 - Sep 13



Sep 25 - Oct 4

**65<sup>th</sup>**  
*Season*



LyceumTheatre.org



660-837-3311



FIND OUT MORE!

# LYCEUM STAFF

## LEADERSHIP

Artistic Director ..... Robyne Parrish  
Producing Director ..... Pete Herber

## ADMINISTRATION

Business Development Director ..... Sandy Selby  
Operations Director & Company Manager ..... Ken Martinez  
Finance Manager ..... Sandra Walter  
Marketing Assistant ..... Rita Shaw  
Artistic Associate Creative Artist Residency ..... Markia Nicole Smith

## PATRON SERVICES

Ticketing & Group Sales Manager ..... Tempe McLaughlin  
House Manager ..... Kathy Lang  
Assistant House Manager ..... Randy Glenn  
Box Office Assistant Manager ..... Andrea Hatfield  
Box Office Associate ..... Sara Brennan  
Box Office Associate ..... Drew Walker  
Concessionaire ..... Rayetta Leimkuehler  
Concessionaire ..... Jerry Leimkuehler  
Concessionaire ..... Jessica Leimkuehler  
Concessionaire ..... Rachele Borgman

## PRODUCTION

Director of Production ..... Ryan J. Zirngibl  
Technical Director ..... Jenny Bauer  
Assistant Technical Director ..... Axel Adams  
Lead Carpenter ..... Hannah Culwell  
Carpenter ..... Tegan Sanders  
Carpenter ..... Rachel Schmitz  
Charge Artist ..... Berit O'Brien  
Production Electrician ..... Darby Davis  
Associate Costume Designer ..... Ashley Harrison  
First Hand ..... Emma Cullimore  
Sticher ..... Ally Baker  
Wardrobe Manager ..... Josh Dougherty  
Wardrobe Assistant/Stitcher ..... Levi Crist  
Props Coordinator ..... Kylie (Ky) Urich  
Audio Engineer ..... Katelyn Gillette  
Production Assistant ..... Declan Brennan  
Follow Spot Operator ..... Benjamin Neidig  
Follow Spot Operator ..... Sawyer Powers  
Stage Hand ..... Melissa Bohon-Webel  
Stage Hand ..... Jacques du Plessis

## FACILITIES & GROUNDS

Property Manager ..... Marty Selby  
Maintenance ..... Ed Harper  
Housekeeping ..... Nancy Black  
Lawn Care ..... James Townsend  
Landscaping ..... Rost Landscaping, Inc.

## OUTSIDE SERVICES

Attorney ..... Amanda Miller, Meridian Law LLC  
Accounting Firm ..... Howe & Associates P.C.  
Information Technology ..... LammTech  
Graphic Artist & Designer ..... Jim Young, J. Young Creative  
Website Design & Support ..... Hal Borland  
Video Production ..... Brad Crum Creative  
Playbill Advertising Sales ..... Deborah Marshall, Second Chapter Studios  
Printing ..... Green Printers  
Physician ..... David Keuhn, M.D.  
Chiropractor ..... Daniel J. Fahnestock, D.C.

# HERITAGE SOCIETY



SUPPORTING THE LYCEUM

FOR GENERATIONS TO COME

The Arrow Rock Lyceum Theatre opened its doors in 1961, and over a half-century later it continues to be a vital arts institution in the heart of Missouri. Our Heritage Society was developed to ensure we have a long-lasting future. The generous individuals listed below have made a lifelong commitment to The Lyceum through a very special and important form of financial support, a planned gift. These gifts may come through a variety of estate planning options such as a will, gifts of life insurance, a gift annuity, or a trust.

---

**We invite you to consider joining our Heritage Society and help provide vital, time-honored contributions to our historic theatre.**

---

John Ashford

Chet F. Breitwieser

Charles and Pat Cooper

Jane C. Crow

Kathy Digges

Dana Frink

John and Trish Fletcher

Dave and Nancy Griggs

Dennis and Marilyn Hunter

John and Donna Huston

Michael Kateman

Day and Whitney Kerr

Erich and Edna Kirsten

Stan and Kay Kuecker

John Landrum

Rich and Debbie Lawson

Dick and Cindy Malon

Turf and JoAnn Martin

Craig McDaniel

Janet McKin

Lewis and Susan Miller

John B. Stewart

Abigail W. and Fredrick M. Tempel

Bill and Jennifer True

Paul and Marlee Walz

Kenneth Zimmerman

For more information, contact Sandy Selby at 660-837-3311 x6103.

# PRODUCERS SOCIETY



Through their generous leadership giving, this amazing group is instrumental in helping bring quality productions to our stage. We give our sincere thanks to these dedicated donors who keep The Lyceum thriving for future generations.

## **Executive Producer (\$100,000 or more)**

The Weiss Family

## **Spotlight Producer (\$25,000-\$49,999)**

Beatrice Litherland Smith  
Wood & Huston Bank

## **Star Producer (\$10,000 - \$24,999)**

Chet Breitwieser & Rod Starns  
Jill Darwent  
Gordon Family Foundation  
Hereth Insurance Consulting  
Richard & Marti Hodge  
Richard & Barb Knaebel Foundation  
Peter Kingma & Thom Lambert  
David C. Kirsten  
LammTech  
John Landrum  
Jan & Gerald Summers  
John Kenneth Zimmerman Estate

## **Lead Producer (\$5,000 - \$9,999)**

Roger and Ronnie Alewel  
Kelly & Greg DeLine  
Doris Dixon  
Dave & Nancy Griggs  
Gerald L. Hazelbauer &  
Linda C. Randall  
Lynn Karlgaard  
Mark E. Kelly  
Lewis & Susan Miller  
Vicki Russell  
Barb & Rick Sommer  
William & Jennifer True  
Diana & Larry Willen

## **Featured Producer \$2,500 - \$4,999**

Diane Benedetti  
Joan Butcher  
Helen & Bryce Cripps  
Linda Detring & Joan D'Ambrose

Kathy Digges  
Doug Drown  
Martha Fifer  
First State Community Bank Columbia  
Kee Groshong  
Rosie & John Harper  
Donna Huston  
Brad & Brenda Jones  
Michael Kateman  
Jim & Marjorie Marberry  
Janet Meives  
Jill Mitchell & George Pierrot  
Larry Morris  
Cindy Newton  
Carrie Peecher  
Paul & Kim Ratcliffe  
David & Karen Rawlings  
Gary & Carol Smith  
Dave & Terry Wollersheim

## **Producer (\$1,500 - \$2,499)**

Elizabeth & Page Bellamy  
Larry & Diane Berneking  
Blumhorst Veterinary Hospital  
Laura Brenton  
Nancy Tucker Cleaveland  
Vicki Fain  
Cozette Hoefler  
Dallas Jensen & Glenda Moun  
Wallis & Nancy Landrum  
Kevin Lines  
Turf & JoAnn Martin  
Dr. Cynthia and Steve Mehrer  
Gloria & Conrad Moody  
Dave & Penny Rich  
Don Richard & Craig Mudge  
Kevin & Pam Riggs  
James & Carol Roller  
Tom & Brenda Schupp  
Victoria Shahan  
Lisa & Keith Straatmann  
Jim & Shari Thomas  
Ellis & Christy Tuttle  
Jay & Rose Ward

Lori Wightman & Darren Grove  
Doug & Ellen Woody

## **Associate Producer (\$1,000 - \$1,499)**

Gaylyn Alexander  
Donald Bay  
Kathy Borgman  
Mike & Janice Burnam  
Jerry & Meghan Carpenter  
Myra Christopher  
Charles & Pat Cooper  
Justin Cramer  
Jane C. Crow  
Dale & Belinda Essmyer  
Shirley Farrah  
Larry & Paulette Fick  
Lucy Fletcher  
Bryan & Norine Gaskill  
Mary Haldiman  
Denise Haskamp  
Nick & Leslie Huston  
Walter & Janet Iman  
David Jonas & Cordell Smith  
James & Debra Lemberger  
Paul & Lynita Little  
Linda McCollum  
Kathy McMurry  
David & Jean Peters  
Jeanette & Bob Petty  
Phil & Bonnie Prather  
Jon & Carol Ann Rhodes  
David & Debra Schellhorn  
Denise Schisler  
Judith Smith  
Jacob Stanton  
Jim & Mary Stillely  
Donald Stouffer  
Harry Sulzberger  
Alice Swanson  
David & Jennifer Urich  
David & Marlene Van Horn  
David Weiss  
Alan & Susan Wessler  
Genny Wright

# LYCEUM BACKERS



Our annual backers are the heartbeat of this organization. We give our thanks and appreciation to the more than 400 donors who have generously shown how much they appreciate the art of live professional theatre and this unique treasure in mid-Missouri.

## Director (\$500 - \$999)

Michael Bollinger  
Ann Covington  
Deborah Daniels  
Paula Dooley  
Mandy Dorrance & Bruce Satterlee  
Janice Douglas  
Dan & Nikki Fahnstock  
Arthur L. Farris  
Bob Fenlon  
Robert & Linda Gordon  
Green Printers Inc/Big Prints  
Jennifer Groat  
Chris & Pam Gumper  
Cynthia Heimsoth  
Gene Hirst  
Eric Hoke  
Jim & Barbara Humburg  
Jane Jackson  
Jan & Tim Jeffries  
Darryl & Nancy Kempf  
Day & Whitney Kerr  
Mike & Kathy Lang  
Ron Larkin  
Linda Litton  
Pat & Patty Logue  
Cathy Marshall  
Jeffrey McMillian  
Toni Messina  
Faye & Mike Moser  
Gina & Doug Muzzy  
Gary & Jane Myers  
Kristen Nordstrom  
Lindi Overton  
Carlene Petree  
Mary Lou Porter  
Jan Rich  
John & Maice Scott  
James & Patti Sears

Marty & Sandy Selby  
Patti & Richard Sheets  
James M. Siverling  
Ruth & Jeff Stegner  
Byron Stewart  
John B. Stewart  
Sarah & Marion Storm  
Lisa & Keith Straatmann  
Jerry & Maggie Ubl

## Star (\$250 - \$499)

Virginia & Sam Bayne  
Mark & Michele Belcher  
Anne Bills & Deborah Jacobs  
Dan & Betty Buchheit  
Nancy Buchholz  
Daniel Calandro  
Kathy Cary  
Philip & Donna Clithero  
Steven & Jan Collins  
Ron & Carol Cox  
Winnie Davis  
Carol Deaknye & John Adams  
Jim & Karen Deutsch  
Louis Dorn  
Dale & Belinda Essmyer  
Rodney & Caryn Ginter  
Linda Glasgow  
Al & Cindy Green  
Gerald & Wendy Hardy  
Dale & Jan Hinnah  
Cindy Imhoff  
Stephen & Mari Ann Keithahn  
Chris & Christy Klenklen  
Mary Klenklen  
Shirley Marcum  
Ed & Ellen Miller  
Phyllis Naragon  
Scott & Cheryl Orr  
James & Dana Page

Dennis & Barbara Preis  
Gregory & Ruth Schmidt  
Kevin Selman  
Ann Stafford  
Tom & Susie Stallings  
Sarah & Marc Tischler  
Daryl Vaughan  
Paul & Martee Walz  
Tom & Karen Weaver  
Susan A. West  
Herb Willbrand

## Leading Player (\$100-\$249)

Jaye & Gary Analora  
Linda Ashford  
Bob & Bridget Bagby  
Frank & Yelena Barnhart  
Gary & Meredith Black  
Richard Blaha  
Gene & Carol Bramon  
Jeff & Ruth Breedlove  
Eddie & Karen Brickner  
James Briggs  
Patricia Ann Bronsing  
Marcia Brueggenjohann  
Danna & Brad Bryant  
Ann Carter  
David & Sandra Clarkson  
Russell & Betty Cobb  
Linda Cockrell  
Sheila Cook  
Taylor & Sue Crismon  
James & Mary Crooks  
Anthony Dearing  
Daniel & Debi Derendinger  
Dorinda Derow  
Beth Dimon  
Wendy Durk  
Linda Easley  
Roger Edmonds

# LYCEUM BACKERS

Ken & Bev Eichelberger  
Jani Faris  
Bob & Ellen Ferguson  
Christine Foshage  
Sheila A Fox  
Richard Frank  
Loyd French  
John & Valerie Frerking  
Ellen Gardner  
Mary & Ted Garten  
Jim & Betty Gember  
Carol Gerhard  
Debra Gibson  
Linda Gosney  
Yvonne Gust  
Robert Hacker  
Art & Lisa Hains  
Cathy Hatfield  
Mark & Andrea Hatfield  
Martha Hogan  
George & Victoria Hubbell  
Lee Huey  
Bob & Peggy Irish  
Nancy & Bill Jackson  
David Johnson  
Grayson Kabler  
Evelyn Korschgen  
Peter Koukola  
Colby Kruse  
Susan Kyle  
Glenn & Misty Langston  
Rich & Debbie Lawson  
Richard & Tracy Lay  
Joanie Lichty  
James & Sheryl Long  
Lanny & Patsy Lybarger  
Mary Alice Lyon  
Daniel & Irene Mauss  
Susan McAdams  
David & Sherry McCarthy  
Craig & Michelle McCoy

Kirby McCullough & Dan Auman  
Bruce & Tempe McLaughlin  
Brenda & Alan Meyer  
James Miller  
Carolyn Garnett Miller  
Karen Avery Miller  
Peggy & Mark Montgomery  
Chuck Moyer  
Glenn & Marie Orr  
John D. Perkins & Nicolette A. Yevich  
Barbara Phillips  
Joe Potter  
Marlice Pound  
Steve Renz  
Rob Rice  
Harriet Ritter  
Ashley Ross  
Michael & Debbie Rothhaar  
David M Rothhaar  
Ricky Rouse  
Bill & Jolene Schulz  
Julee & Jeff Sherman  
Phil & LuRae Shreves  
Janet Spencer  
Dave & Anne Stockman  
Susan Stropes  
Justin Swartz  
Robert & Janie Theobald  
Sandra Thompson  
W B & Ruth E. Tichenor  
Ann Travers  
Bruce & Pamela Walker  
Mary & Steve Weinstein  
George Weir  
Wilford & Jackie White  
Gabby White  
Dan & Ruth Wilson  
Leslie Wimer  
April Woodall  
Candy & Larry Young  
David & Sue Ziegenhorn

**Understudy  
(\$50-\$99)**  
Alana Barragan-Scott  
MaryAnn Becker  
Judy Best  
Denise Bollinger  
Debra Cartwright  
Rosemary Christensen  
Deborah Clayton  
Vincent & Sharon Collet  
Meryl Cullom  
Jay Englander  
Michelle Meade & Richard Esvang  
Britt Faaborg  
Jane Ford  
Maria Angela Forgey  
Mark Glover  
Jim & Gwen Gresham  
Linda Headrick  
Sparky Heevner  
Pete & Tracy Herber  
Michelle & Jeremy Hofstetter  
Wayne & Jan Holden  
Richard Horrell  
John Kalan  
Michael Kateman  
Loree Kessler  
Shelley Lamberta  
Stessie Millner  
Theresa O'Neill  
Kenneth & Jen Petterson  
Elise Rebmann  
Jon Reed  
Beverly Rollings  
Francis Russell  
Judy & Gene Stiek  
Susan Stropes  
Robert Theobald  
David Trelow  
Jacqueline Vaughan  
Susan Voss  
Lynnette Weber

**J. HUSTON**  
  
**TAVERN**

**We've fed Arrow Rock for nearly two centuries, from stage coaches to theater stages and everything in between.**



**THEATER DAYS**

**Our famous  
fried chicken  
buffet**

**OTHER WEEKENDS**

**Our tavern & trail  
menu with elevated  
comfort foods**



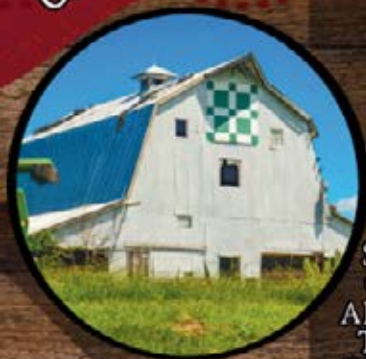
660-837-3200

[hustontavern.com](http://hustontavern.com)

# BARN QUILTS OF THE BOONSLICK

Arrow Rock, Blackwater,  
Boonville, Fayette,  
Glasgow, Marshall,  
New Franklin, Pilot Grove,  
and Rocheport

*Come Explore Saline, Cooper & Howard Counties*



EXPLORE THE  
SCENIC RURAL  
COUNTRYSIDE  
AND EXPERIENCE  
THE TOWNS OF  
THE BOONSLICK,  
ON A DRIVING  
TOUR WHICH  
FEATURES OVER  
70 COLORFUL  
& CREATIVE  
BARN QUILTS



*Plan your  
Adventure  
today at*

BARN  
QUILT  
VIDEO



[WWW.BOONSLICKBARNQUILTS.COM](http://WWW.BOONSLICKBARNQUILTS.COM)